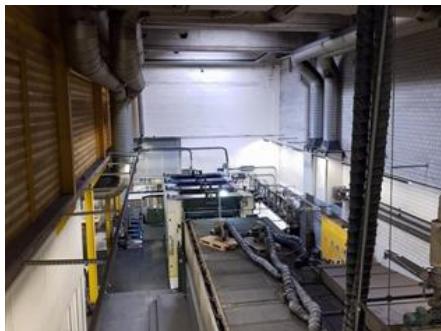


Curriculum Vitae of the machine Reference number: 24015



MAN LITHOMAN 72 Heat-set Web Offset Printing Machine

SPECIAL OFFER

Manufacturer:	MAN Roland websystem GmbH, Ausburg, Germany
Production Year:	2010
Number of Colours:	4
Cut-off:	620 mm
Max. Speed:	45000 imp./hour
Counter:	1950 mil.imps.

Availability: immediately

Sale Reason: closing company



Condition of the Machine: very good condition, well maintained, worn out according to its age not in production but still plugged in

Disclaimer: The Condition of the Machine assessment presented in this CV was either obtained from the last machine operator or is based on an inspection performed by our employee, just to provide you with as much information as possible. For more certainty we recommend your own check or an assessment of an independent mechanic. We cannot provide you with any machine guarantee.

More Details:

paper grammage 40–100 g/m²
print direction left to right
circumference: 1240 mm 2.060 mm
1 automatic reel feeding system MAN Roland AUROload 2.1
1 MEG splicer MEGTEC – D.L.C. 5000 incl. Infeed unit
1 Web Monitoring system Procemex, type Procemex -7x
1 Webbing up system MAN Roland make, from splicer up to the former
4 MAN Roland Lithoman Printing units with PPL and automatic plate change APL
1 Blanket washing system Oxy Dry
1 automatic ink roller washing system Baldwin, type APW
1 dampening solution unit Technotrans, type delta.d 400 W
1 Ink supply system for 4 printing units, manroland/technotrans make
1 Web catching device Baldwin, type webcatcher s18i
1 MEGTEC dryer, type Dual Dry RTO 157, incl. TNV, 15,7 m drying length
1 MAN Roland chilling unit with 6 chill rollers and 3 Cooling circuits (1+2+3 Rollers) 1 Washing unit for first and second chilling roller, manroland/Baldwin make
1 Remoistener unit Eltex, type Webmoister 3000
1 Color density control system QuadTech, type CCS-IF-WR with central reporting 1 Folder superstructure incl. silicon unit, manroland-Weko, type WFG 1.4
web edge aligner Erhardt & Leimer
color register control Quad Tech, type Register Guidance
fotoelectric cutting register control Quad Tech, type Ribbon Control System
longitudinal gluing and folding aid Robatech, system Webtack A
longitudinally movable former
1 additional Folding Group, (Piggyback Folder) on top of the main folder
for production of 8 X 8 pages A4, 8 x 10 pages A4, 8 x 12 pages A4 1 MAN Folder PFI/3-2, system 2:3:3:3
1 cylinder sticher for A3
1 drive equipment, single motor drive for, printing units, chiller unit, draw rollers, former roller, folder
2. 2 Press Console
1 Press control system with
PECOM press Basic
PECOM Extended
PECOM printnet pressport
1 fully automatic plate punch
1 Refrigeration Center Cofely with cooling tower
drawings, tools and manuals as available at the present place of installation.